

LCC Modelling System

B 70-20 Brick and steel overbridge

All drawings are not in scale.

LCC Modelling System is flexible and you can make easy modification. Please visit our website at www.lcut.co.uk to shop for additional LCC elements.

Total width: 152mm Road width: 107mm

Deck level: 137mm

Inner clearance: 123mm high in middle, 93mm high on the sides and 163mm wide

Total length: 263mm

Bundle contains:

- 4x LCC 70-76
- 4x LCC 70-77
- 2x LCC 70-87
- 2x LCC 70-88P
- 4x LCC 70-89

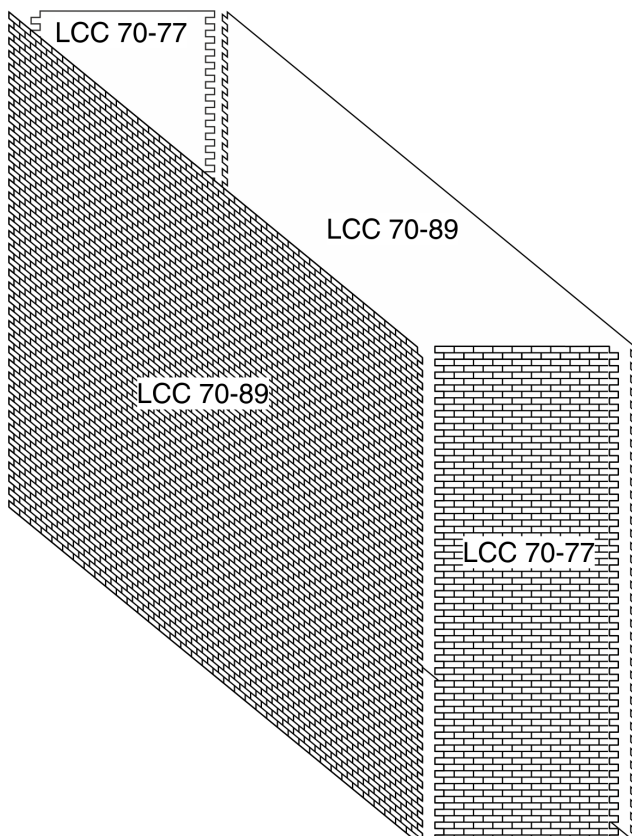


We recommend PVA or any other paper/wood glue for the main fibre board parts and resin based glue for 3D printed parts.

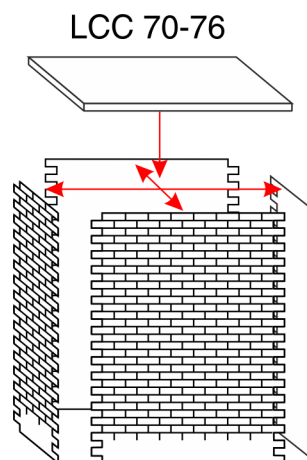
Painting recommendation:

We recommend using acrylic paints. There is no need to undercoat the surface but it can be done if desired. The material used is porous and relatively forgiving, heavy coats are unlikely to flood the brickwork.

PIERS AND POSTS

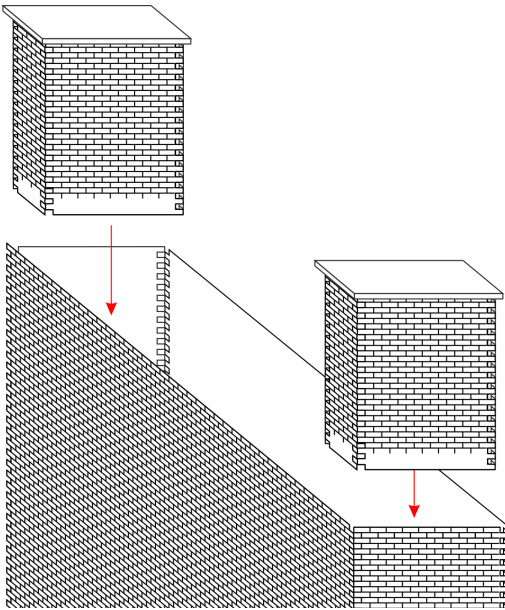


Apply glue in between the element interlocking bricks. Push parts at a right angle to each other. If desired use a square to help align the parts at the right angle.

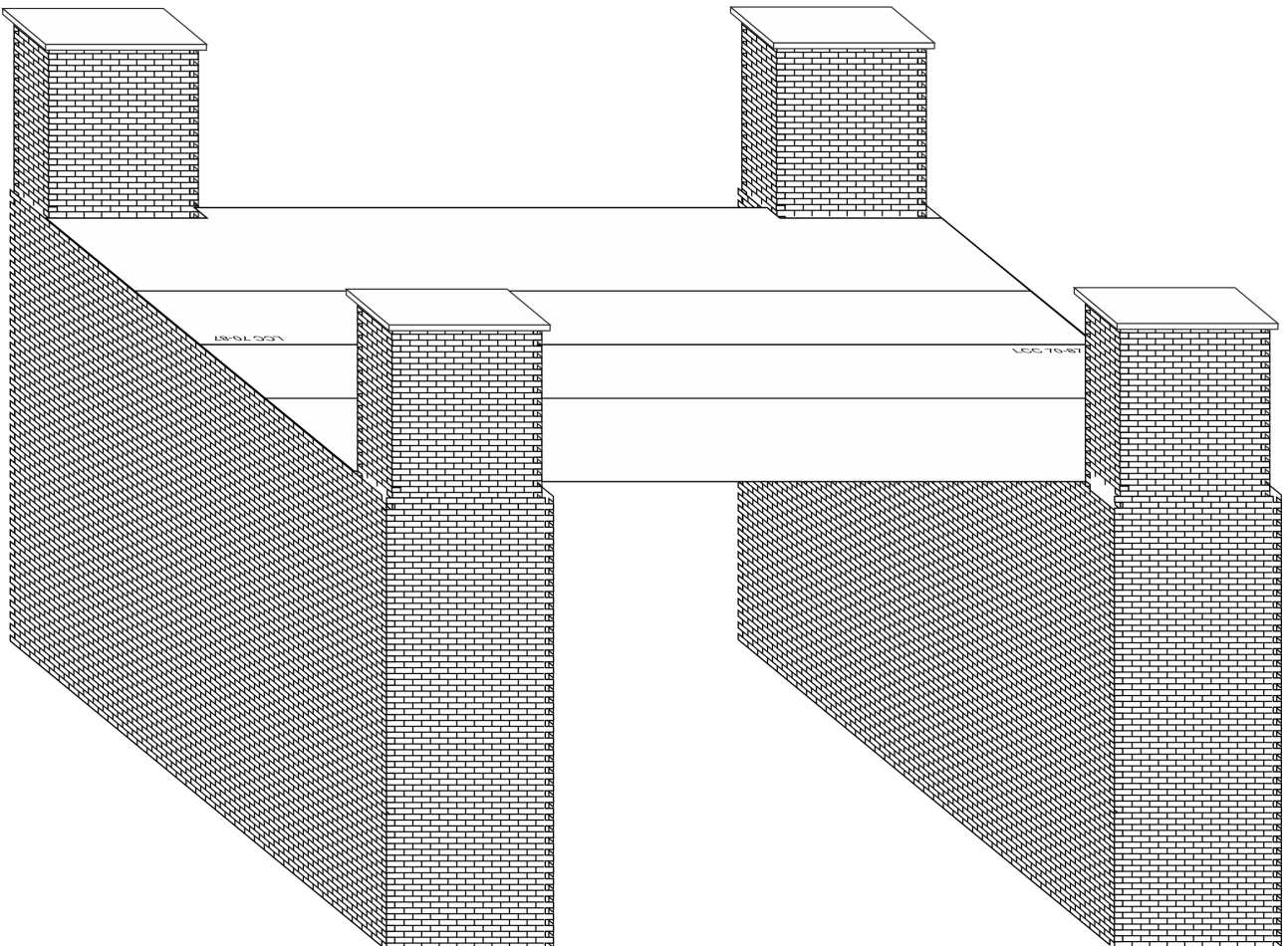


PIERS AND POSTS CONTINUED

Insert posts into the pier making sure that they are aligned well. Misalignment at this stage can cause the parapet to not register correctly to the pier.

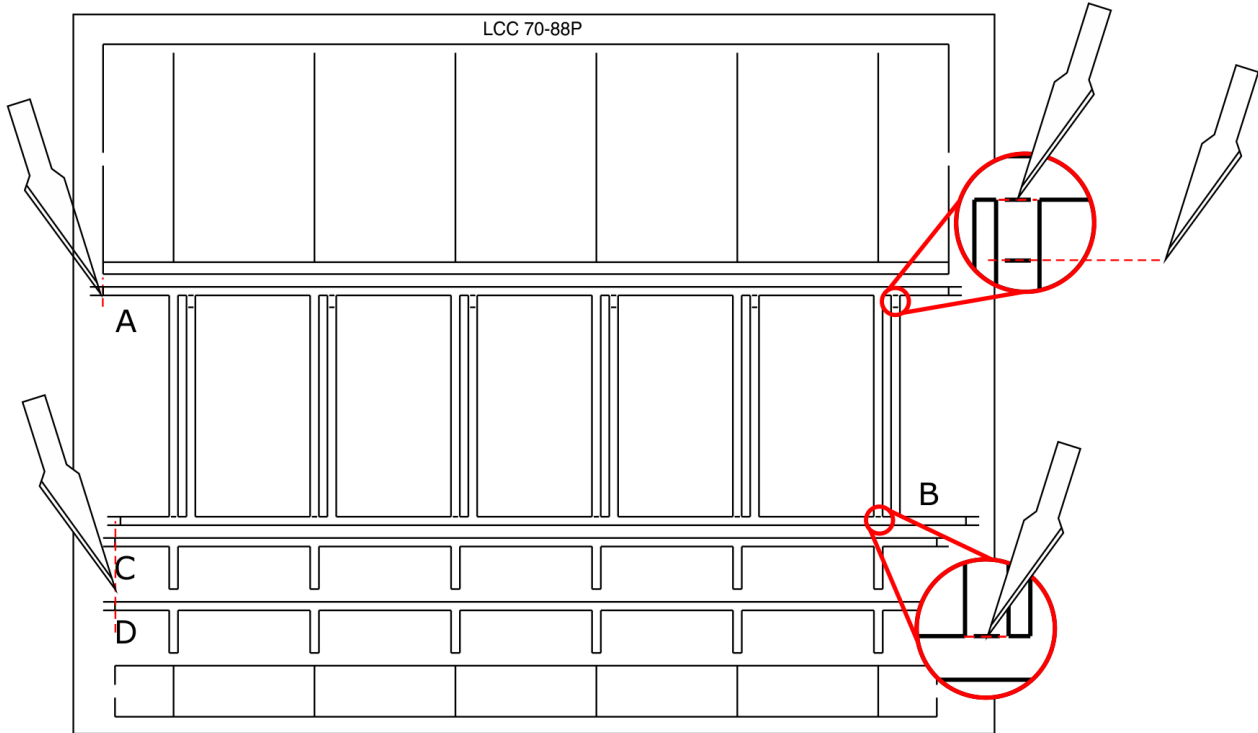


DECK



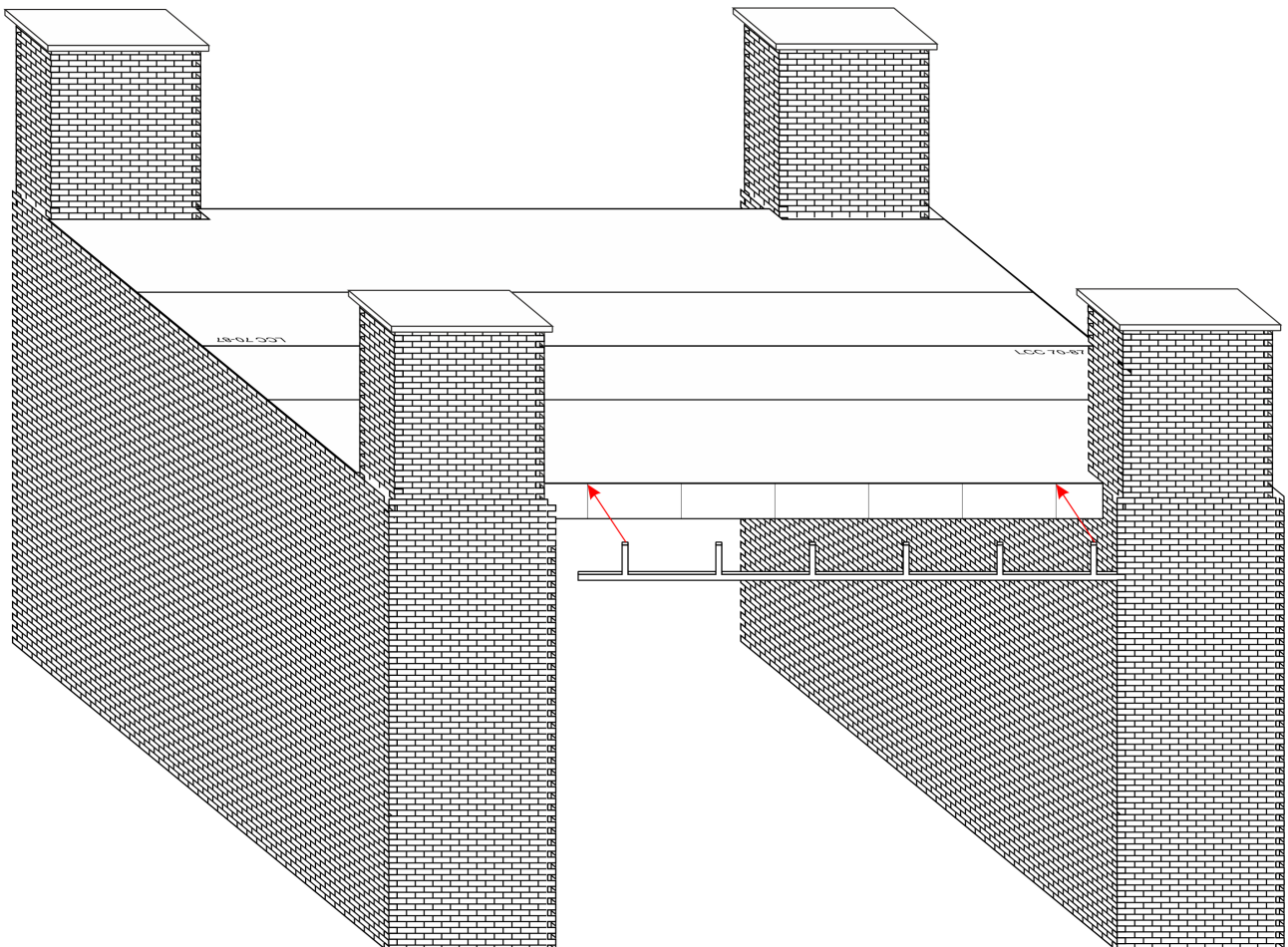
Glue the first deck element to the piers thus joining two piers together. The deck was designed to be a very close fit and it is normal for it to be slightly reluctant to locate in place. Apply gentle force to push the second deck element into place but be careful not to strip bricks off the posts. If the deck is too tight trim off some material from the inner seam.

PARAPET



ALL SCRIBED LINES SHOULD BE UNDERNEATH THE PRONGS AND NOT BE VISIBLE WHEN THE PARTS A,B, AND C ARE GLUED TO THEM

Start parapet assembly by cutting out the elements from LCC 70-88P. Part marked A should be cut out with the prongs at full length. Part marked B should be cut out with the prongs 1.4mm shorter. Use the lines to aid in cutting. Start assembly by gluing the shorter girder under the deck flush with the edge of the deck. Glue the part marked C to the small girder using the scribed lines to align the prongs of the part C. Girder and the element C glued together should stick out about 1.4mm proud of the deck edge. Glue element D to the back of the small girder in the same orientation as element C.



Next step is to glue the large girder to the deck and posts. Glue the large girder in so that it is flush with the element C. Note the scribed line should face to the deck side where element B will be glued later. Glue the element A to the large girder aligning the prongs with the lines on the girder and the element C. Element A should be flush with the top of the girder. Element A should be 1.4mm proud of the element C. Finally glue the element B to the back of the large girder aligning the prongs with the lines.

